



RealMOD™ SF **2X qPCR mix**

iNtRON Biotechnology, Inc.

INTRODUCTION

SF Real-time PCR dye

RealMOD™ SF series

SFC Green dye is a DNA-binding dye with many features that make it a superior **alternative to SYBR Green I or Eva Green** for qPCR. Apart from having similar spectra, SFC Green dye has important features.



“ SF ”

- **Special Fluorescence**
- **Stable Fluorescence**

- iNtRON -

1. Intercalating Green SFC dye

- Real-time W² line : SYBR Green dye
- Real-time AP line : Eva Green dye
- **Real-time SF line : SFC Green dye**

2. SFC dye Features

- Excellent Delta Rn(ΔR_n) results & Higher sensitivity
- SFC Green dye shows much less PCR inhibition
- **Higher bright fluorescence** & Long half-life
- **Extremely stable to heat and light.**

3. Similar Wavelength

Dye type	Excitation	Emission
SYBR Green	497nm	520nm
Eva Green	500nm	530nm
SFC Green	459nm	522nm

RealMOD™ Green SF 2X qPCR mix

Cat No. 25353 / 100 rxn



Selling Point & Advantage

- Highly specific and reproducible real time PCR
- Excellent efficiency in case of low copy number targets
- Superior performance with long (up to 500 bp) and GC-rich templates
- Blue visualization dye for easy pipetting



- Storage condition : Store at -20°C
- Expiration date : Stable for 1 year

KIT CONTENTS

Label	Volume
RealMOD™ Green SF 2X qPCR mix	1 ml



Description

RealMOD™ Green SF 2X qPCR mix is a 2X concentration premix type reagent, which contains all necessary reagents for Real-time PCR reaction except for primers and template DNA.



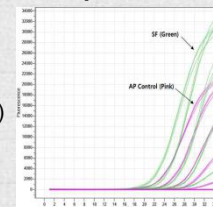
Performance test & Data

Real-time PCR equipment test verifies product versatility

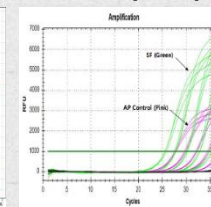
ΔR_n
(Amplification)

Melting
Curve

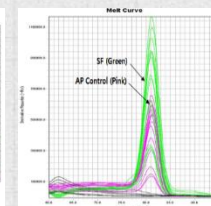
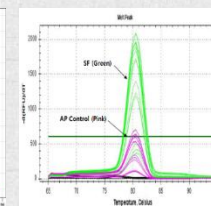
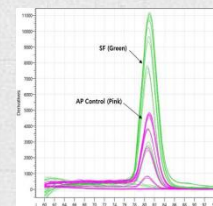
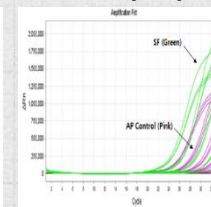
Bioer [LineGene 9600]



Bio-Rad [CFX96]



ABi [7500]



RealMOD™ Probe SF 2X qPCR mix

Cat No. 25354 / 100rxn



Selling Point & Advantage

- Highly specific and reproducible real time PCR
- Excellent efficiency in case of low copy number targets
- Superior performance with long (up to 500 bp) and GC-rich templates
- Application of Hot-Start PCR



- Storage condition : Store at -20°C
- Expiration date : Stable for 1 year

KIT CONTENTS

Label	Volume
RealMOD™ Probe SF 2X qPCR mix	1 ml



Description

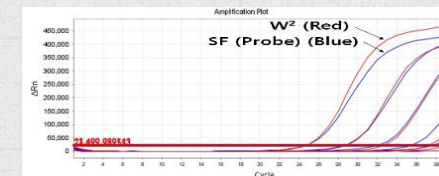
RealMOD™ Probe SF 2X qPCR mix is a 2X concentration premix type reagent specially designed for real time PCR by using TaqMan probe. And this kit contains all necessary reagents for Real-time PCR reaction except for primers, probe and template DNA.



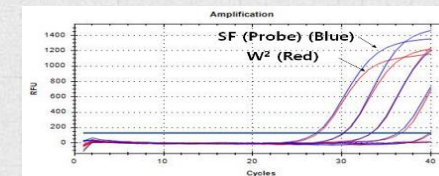
Performance test & Data

Real-time PCR equipment test verifies product versatility

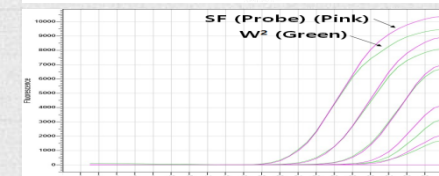
Abi [7500]



Bio-Rad [CFX96]



Bioer [LineGene 9600]



Wide Instruments Compatibility

RealMOD™ SF 2X qPCR mix is designed for use with standard cycling mode on standard and fast qPCR platforms regardless of requirements in ROX



Applied Biosystems

- Quant Studio 12K Flex
- ViiATM 7
- 7900HT
- 7500, 7700
- StepOne
- StepOnePlus



Bio-Rad

- CFX96 & CFX384
- iQTM5 & MyiQ
- Chromo4
- Opticon® 2
- MiniOpticon®



Quiagen

- Rotor-Gene® Q
- Rotor-Gene® 6000



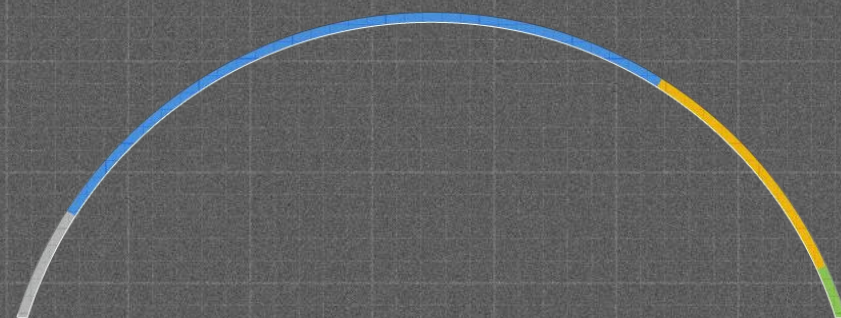
Roche

- LightCycler® 480



Etc

- Stratagene : MX3000P
- Stratagene : MX3005
- Illumina : The Eco
- Eppendorf : Mastercycler



Thank you

RealMOD™ SF 2X qPCR mix